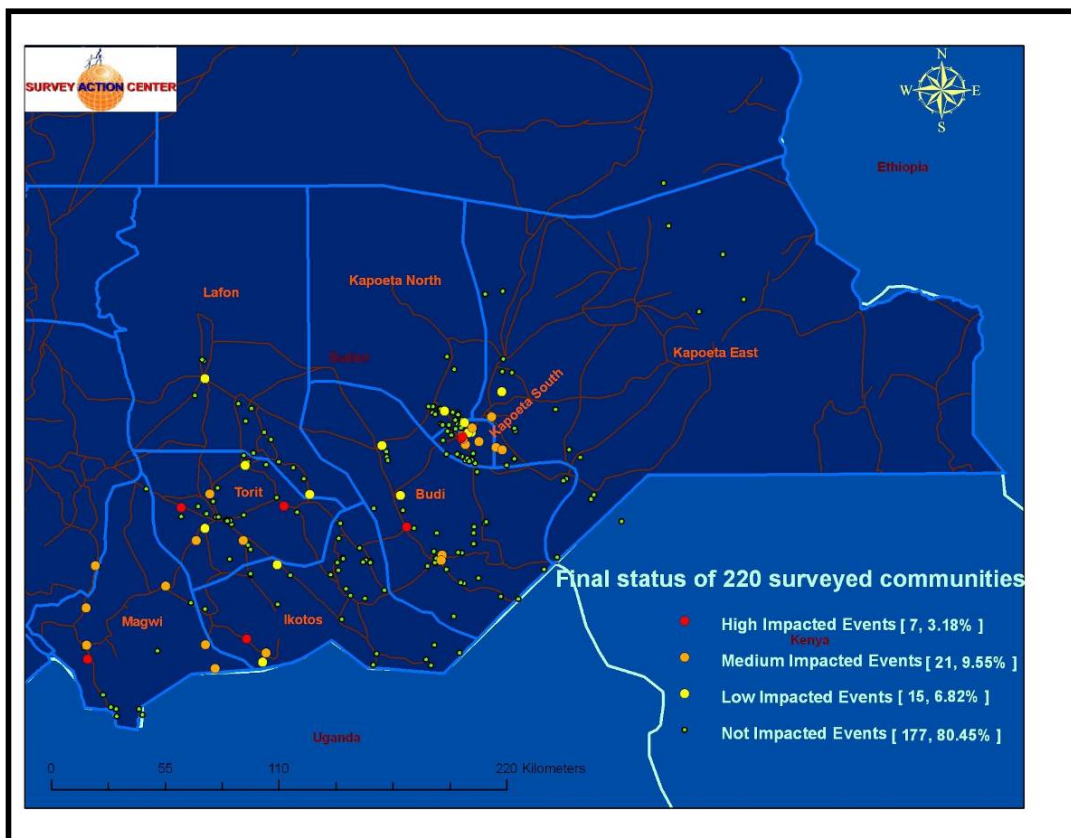




Threat Definition and Demarcation
Eastern Equatoria, South Sudan



Impact of landmines across Eastern Equatoria

Project period: 1st May 2007 – 31st January 2007

Date of Submission: March 2007

MAG, 47 Newton St, Manchester, M1 1FT, United Kingdom
Tel: +44 161 236 4311 Fax: +44 161 236 6244
UK Registered Charity No. 1083008 Company No. 4016409
www.magclearsmines.org

1. Project summary

Project Name:	Threat Definition and Demarcation, Eastern Equatoria, South Sudan
Location:	Eastern Equatoria, South Sudan
Total Budget:	\$237,650
Time Frame:	1 st May 2007 – 31 st January 2007
Project Purpose:	<p>The project will support the settlement of returnees and community development for residents in areas which are impacted by mines and UXO. This will be achieved by:</p> <ol style="list-style-type: none">1. Completing technical assessments of Suspected Hazardous Areas (SHA)2. Developing clearance plans for the removal of the threat posed by confirmed hazardous areas3. Marking hazardous areas4. Removing and destroying items of UXO5. Providing a Community Liaison (CL) function in support of mine action
Beneficiaries:	Beneficiaries are resident and returning populations. UN agencies, NGOs and people working in development projects in South Sudan.
Implementing Agency:	Mines Advisory Group (MAG) 47 Newton Street, Manchester, United Kingdom, M1 1FT
Contact Person:	Abigail Hartley, CPM MAG Sudan
Email:	abigail.hartley@magsudan.org
Phone	Satellite: +88 2162 115 4982 Mobile +249 (0)912 179 154 or +254 (0)725 365 478

2. Project summary

Through the provision of a four person Threat Definition and Demarcation Team (TDD) MAG will reduce the impact of landmines and UXO on resident and returning populations in Eastern Equatoria. The team will respond primarily to the results of the Landmine Impact Survey (LIS), completed in Eastern Equatoria in August 2006, and also respond to Dangerous Area (DA) reports as tasked by the Regional Mine Action Office (RMAO) Juba. During the nine months of the project period the TDD will complete technical assessments of all 83 suspect hazardous areas (SHA) as reported by the LIS. The TDD will be able to travel throughout the state and establish temporary camps allowing access to the 43 communities where impact has been reported.

The project will support the settlement of returnees and community development for residents in areas which are impacted by mines and UXO. This will be achieved by:

1. Completing technical assessments of Suspected Hazardous Areas (SHA)
2. Developing clearance plans for the removal of the threat posed by confirmed hazardous areas
3. Marking hazardous areas
4. Removing and destroying items of UXO
5. Providing a Community Liaison (CL) function in support of mine action

3. Project Rationale

The LIS was implemented in Eastern Equatoria by MAG on behalf of the Survey Action Centre (SAC) between June and August 2006. The result was a comprehensive survey of the impact of mines and UXO across the state.

Impact Category	Impacted Communities		SHA	
	Number	%	Number	%
High	7	16	13	16
Medium	21	49	52	63
Low	15	35	18	21
Total	43	100	83	100

The area which was identified by the LIS as currently suspected of being impacted by mines is 17,265,300 square meters. It is understood that communities over emphasise the size of SHAs. It is anticipated that on completion of a technical assessment of each of the 83 sites the contaminated areas will be reduced by an average of 50%. Through the completion of technical assessment by the TDD 8,632,650 sqm of land will be declared free of mines.

The number of residents living in impacted communities is 83,087. Currently they are living in an environment contaminated by mines which continually impact on their life. The presence of mines is impacting on their lives by blocking access to housing, roads, land (for agriculture and farming), water and other infrastructure. There are also over 50,000 returnees expected to arrive in the state over the next three years. Currently there is insufficient land available for these people to build houses or enable livelihood establishment.

County	Communities Impacted				Resident Population	Expected Returnee
	Total	High	Medium	Low		
Kapoeta South	13	2	6	5	4,269	2,300
Magwi	10	2	7	1	16,830	32,438
Torit	7	2	3	2	21,616	10,420
Budi	5	1	2	2	35,690	948
Kapoeta East	4	0	3	1	1,907	3,000
Lafon	2	0	0	2	615	4,280
Ikotos	1	0	0	1	960	150
Kapoeta North	1	0	0	1	1,200	0
	43	7	21	15	83,087	53,536

The activities implemented by the TDD will provide immediate relief from the impact of mine contamination to communities in Eastern Equatoria.

4. Organisational Capacity

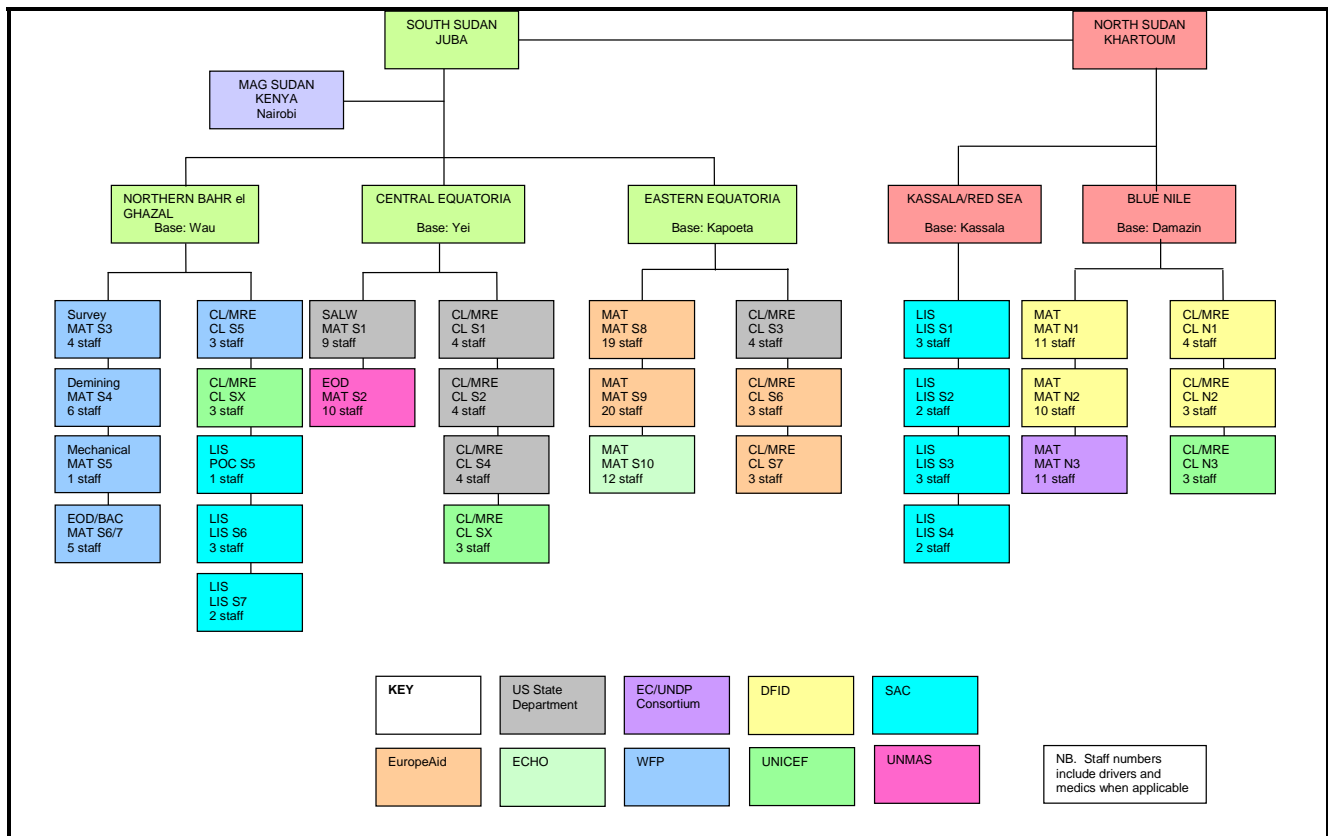
4.1 MAG Overview

MAG responds to the needs of people affected by conflict by clearing the deadly legacy that often remains; landmines, unexploded bombs and booby traps and other ERW. MAG currently has programmes in 11 countries: Angola, Cambodia, Cyprus, DR Congo, Iraq, Lao PDR, Lebanon, Sri Lanka, Sudan and Vietnam and a project in Kashmir. MAG programme activities are implemented through the provision of 60 active grants from 30 different donors; our largest donors include OWRA US Department of State, EuropeAid, DFID, UNOPS, WFP and SIDA.

4.2 MAG Sudan

MAG commenced activities in Sudan in August 2004, initially delivering Mine Risk Education (MRE) to internally displaced people (IDPs), returnees and host communities in Eastern Equatoria. Since then

MAG's capacity has significantly grown and Landmine Impact Survey (LIS), CL/MRE, EOD, battle area clearance (BAC), technical survey, manual clearance and mechanically assisted clearance teams are operational in four different states. MAG works in partnership with OSIL and Jasmir and employs over 280 national staff.



MAG's work in Sudan is principally funded by the US Department of State, the European Union, DfID, the Survey Action Center and UN agencies.

5. Project beneficiaries

The beneficiaries of this project are the populations of Eastern Equatoria. They will be relieved of the physical impact that mines place on their lives

- 83,087 residents of communities impacted by mines
- 53,536 expected returnees to communities impacted by mines

The beneficiaries of this programme extend to staff of NGOs as they deliver emergency relief and rehabilitation supplies and materials. Local authorities will also benefit as they prepare to commence redevelopment of the areas which they govern.

6. Project goal and purpose

The project will support the settlement of returnees and community development for residents in areas which are impacted by mines and UXO. This will be achieved by:

1. Completing technical assessments of Suspected Hazardous Areas (SHA)
2. Developing clearance plans for the removal of the threat posed by confirmed hazardous areas
3. Marking hazardous areas
4. Removing and destroying items of UXO
5. Providing a Community Liaison (CL) function in support of mine action

7. Project results

Impact

- Increase access to land which was thought to be contaminated by mines through completion of technical assessment
- Preventing access to land which is confirmed to be contaminated by mines by marking the area, which will reduce the risk of death and injury due to mines and UXO.
- Provision of Community Liaison (CL) and education about the activities that MAG proposes to implement

Output

- A mobile, 4 person TDD team equipped and trained to conduct site assessment, complete clearance plans, demarcation of known hazardous areas and community liaison activities in remote locations.
- 83 technical assessments of SHAs completed
- 8,632,650 sqm of land thought to be contaminated by mines to be declared free of mine contamination.
- 100% of confirmed hazardous areas marked after technical assessment
- 100% of confirmed hazardous areas Clearance plans developed for all confirmed hazardous areas
- Increased communication between MAG and communities where operations are implemented
- Safe and systematic removal and destruction of items of UXO
- Regular reports on all ERW removal and destruction
- Coordination with all humanitarian mine action organisations and other operational NGOs and UN agencies

8. Project activities

The TDD will consist of two technical officers, a medic and a driver. The technical officers will be trained in the skills of mine clearance, marking of hazardous areas, EOD removal and destruction and in Mine Risk Education and Community Liaison activities. They will combine these skills when visiting community groups.

The Technical Field Manger (TFM) will receive DA reports for high and medium impact task dossiers set by the Juba based RMAO for the TDD to assess. The TDD will commence activities in those communities where SHAs have high and medium impact, and which have been prioritized for action by Government authorities and the RMAO. These tasks are based on information provided to UNMAS from the LIS, MAG's CL teams, other demining organisations, local authorities, SPLA, UN and NGOs active in the area.

Threat Definition Assessment

MAG's first priority will be to verify whether a suspected area is indeed contaminated. MAG will deploy the TDD team to undertake this activity. The team will deploy to the localities of highest impact in Eastern Equatoria.

The TDD led by the TFM will travel to the community which reported the SHA with all of the information which has already been collected. Information will be gathered from as many sources as possible and an assessment of the likelihood of contamination will be made. MAG has developed a risk assessment system for route clearance in South Sudan whereby a risk matrix is completed during information gathering. MAG takes various factors into account; information from some informants is more valuable than others; a full spectrum of informants brings credibility to the resulting suspicion of contamination. A similar methodology will be developed specifically for Eastern Equatoria.

MAG's TDD team will address all 65 high/medium SHAs identified by the LIS.

Develop Clearance Plans

Dependent on the suspected mine threat or likelihood of UXOs the TFM will develop a unique clearance plan using an integrated mine action approach. This may include using mechanical and manual assets. The use of a mechanical asset speeds up the threat definition and/or clearance process exponentially. Currently MAG has a Bozena miniflail to process ground on a suspected dangerous area with follow up quality assurance and verification using manual assets.

The clearance plans will be approved by the TOM and then tasked to one of the Mine Action Teams (MAT) in Eastern Equatoria.

Demarcation

In areas where there is confirmation of mine contamination the TDD will mark the area to prevent people entering. This marking system will be using piles of stones to identify the borders of hazardous areas. They will be placed approximately every 50 meters around the area. This has been used successfully by other agencies in South Sudan. The demarcation is a temporary measure to reduce the risk of people inadvertently entering a mine field.

UXO spot tasks

The TDD will be trained in EOD removal and when in communities will where possible remove items of UXO as they are identified. Items will be removed and taken to a demolition site for controlled destruction.

Community Liaison (CL) Activities

The two deminers and the TFM will also provide a CL capacity to the project. When they enter contaminated communities they will meet with village leaders and local authorities to explain the purpose of the intervention. The TFM and deminers will discuss the impact of the mine contamination with community members and develop a response which is in line with the community needs.

After marking hazardous areas the TDD team will meet with the community to ensure that these markings are understood and encourage all members of the community to abide them. A request will be made that the community do not touch or disturb any of the marking. The TDD will identify if the community has received sufficient MRE and whilst capable of providing minimal MRE themselves will request that MAG's other MRE teams in the state prioritise the provision of this service.

9. Project design

The key to the success of MAG's TDD in Eastern Equatoria is their flexibility and mobility. The knowledge and skills brought to the programme by the TFM are wide reaching in the area of threat assessment, identification of appropriate threat reduction technique, removal of ERW and developing the capabilities of national staff.

The whole of the operation is mobile; the team can be tasked to a remote or difficult to access area and establish themselves in a new location rapidly. The TDD will be self-contained and able to operate away from the base location for extended periods. Funding will cover equipment, running costs, technical supervision and administrative support required by the TDD over the project period of 9 months. The project is designed to respond to the needs of communities and will produce immediate results.

10. Coordination

MAG coordinates all of its activities in Sudan through the National Mine Action Office (NMAO), the UNMAO and UNMAS. MAG provides accurate data to be used in the IMSMA system as well as being given priority tasking by NMAO. MAG also coordinates all activities with local government authorities.

11. Monitoring and Evaluation

The project will be monitored through a structured reporting process. The reporting requirements ensure problems and potential risks are identified at the earliest opportunity so that, where necessary, timely action can be taken to rectify the situation.

The TFM will report directly to the TOM, who in turn reports to the Country Programme Manager (CPM). The CPM will report to MAG HQ (UK). They are responsible for ensuring that all operations and plans are consistent with the agreed aims and objectives of the project. Reports will assess progress in relation to project timescales, expenditure, impacts and activities.

Field accounts will be prepared on a monthly basis by the base camp finance assistant, checked by the finance coordinator and CPM and submitted to MAG (UK) HQ's Finance Department for final verification. Policies and procedures for finance and administration are subject to a written Finance and Administration Policy and Procedures Manual, which has been formulated for all MAG overseas programmes. The MAG Programme Officer in Nairobi and CPM will monitor and support project staff in their compliance with these.

12. Sustainability

The training of national staff ensures that, when MAG's programme finishes in Eastern Equatoria, the skills required to identify and mark dangerous areas and remove and dispose of ERW are still available in local communities.

13. Risks/Assumptions

Assumptions

Assumptions for this project are that access to areas of operations of the TDD team is not prevented due to changes in security, or due to variable weather conditions.

Risks

MAG has fully comprehensive security procedures to take into account any security deterioration and for situations that would require evacuation. These cover the cessation of operations regionally, up to evacuation of staff out of the country. All MAG field operations adhere to the Standard Operation Procedures (SOPs), as defined by MAG Sudan, and in line with International Mine Action Standards. These SOPs cover operational rules for mine clearance / EOD to security procedures for all staff and visitors to the project.

14. Budget description

The attached budget has been calculated based on the experience that MAG Sudan has in operating an EOD team in Eastern Equatoria over the past 12 months. The budget is inclusive of all costs required to establish and run the operation for nine months. The budget is being presented in the format as requested by UNMAS.

Personnel costs include salary, insurance, accommodation and medical expenses for one international and four national staff. Capital expenditure includes the purchasing of one new vehicle, communication equipment, metal detector and trauma kit for the TDD. Travel costs have been calculated for travel in and out of South Sudan for the international TFM this calculation includes cost of flights, transfers and visas. One month of the Logistics Manager has also been covered under this grant. This position will coordinate all procurement and freight of items purchased under the grant. Explosives, marking tape, detonator cable, batteries and other items which are required to complete the technical aspects of the programme are budgeted for under expendable equipment. The TDD teams operations in Equatoria will, like all of MAG Sudan's operations receive support from MAG Sudan office in Khartoum and logs/admin office in Nairobi and MAG UK where there are staff available for supporting all levels of the programme – technical, financial, research and project management.